



Installing Firm-Fill® SCM Acoustical Control Mat

APPLICABLE PRODUCTS

FIRM-FILL® SCM-125

A 1/8" (3mm) sound control mat ideal for when the gypsum concrete pour is not a standard thickness.

FIRM-FILL® SCM-250

A 1/4" (6mm) sound control mat when used in conjunction with a 1" FIRM-FILL® Brand Gypsum Concrete topping, the combined system has been tested to achieve a "Light Commercial" rating from the Tile Council of North America.

FIRM-FILL® SCM-400

A 3/8" (10mm) sound mat is efficiently engineered to limit sound transmission in multi-family construction. Ideal for luxury apartments.

FIRM-FILL® SCM-750

A 3/4" (19mm) sound control mat that offers the largest air-void of any sound control mat and is a cost-effective way to address higher IIC requirements.



Prior to Installation

Check wall bottom plate requirements. Some finished floor heights will exceed that of a single plate wall. Review elevation changes at doorway entrance and at all interior doors, cabinetry and plumbing for transitions and differences and any other issues with the general contractor (GC) prior to arriving at the job site.

Condition of Subfloor

Subfloor shall be structurally sound (L/360), broom clean, dry and free from oil, grease, paraffin, laitance, wax or other contaminants. Concrete substrate shall be 28 days or older.

Application of FIRM-FILL® SCM Acoustical Control Mat

1. Scheduling: Installation of FIRM-FILL® SCM is to be done 1 to 2 days prior to the installation of FIRM-FILL® Gypsum Concretes. Protect FIRM-FILL® SCM from trade traffic prior to application of FIRM-FILL® Gypsum Concretes.

2. Installation



Perimeter Isolation Strip shall be properly installed around areas where FIRM-FILL® SCM will be installed, including any penetrations through the subfloor, including plumbing pipes, beams, heating and cooling ducts or electrical boxes. The Perimeter Isolation Strip must be attached to the wallboard using either staples, or spray adhesive. In all cases, the attachment points must be above the final poured Firm-Fill® GCU surface. Place the Perimeter Isolation around all penetrations in a similar manner.



FIRM-FILL® SCM is laid directly over the concrete, plywood or OSB subfloor, with the colored mesh down and white fabric side up. It should be pushed up tightly to the isolation barrier that was previously installed around the perimeter of the floor; the gap between the floor and wall should not exceed 0.25" (6 mm).



FIRM-FILL® SCM edge must be placed adjacent to other pieces without any gap. Rolls are manufactured with the self-adhesive selvage edge folded over on the fabric top. Starting at the base of the roll, smooth the selvage edge to the adjacent piece. If necessary, tape (duct tape or Hacker Industries, Inc. approved tape) the fabric overlaps snug to the fabric on the adjoining FIRM-FILL® SCM. Tape all other seams to prevent FIRM-FILL® Gypsum Concretes from leaking or penetrating into the core material during pour. Double tape seams if necessary. Tape all points where the FIRM-FILL® SCM and the Perimeter Isolation Strip meet in an "L" formation to prevent FIRM-FILL® Gypsum Concretes from leaking or penetrating into the core material during pour.



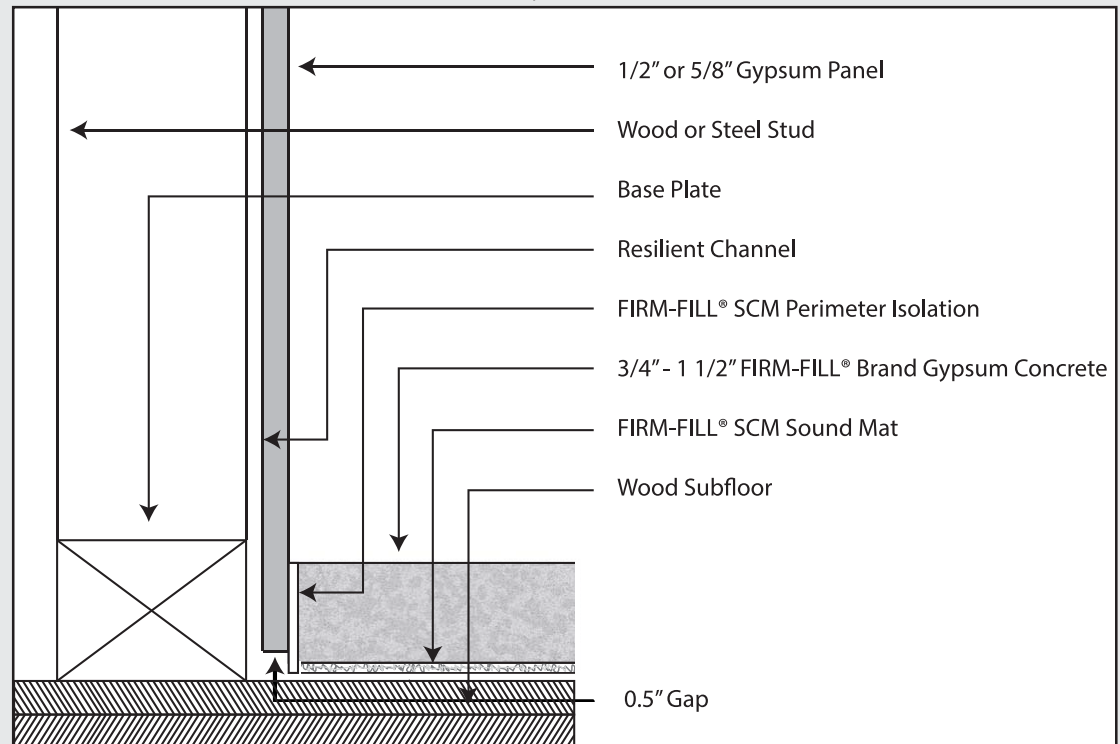
Installing Firm-Fill® SCM Acoustical Control Mat

Application of FIRM-FILL® Gypsum Concrete Underlayment (GCU)

1. Taping and seams of FIRM-FILL® SCM shall be checked and approved by the GC prior to the installation of FIRM-FILL® Gypsum Concretes.
2. Install FIRM-FILL® GCU at the required minimum thickness. Thicker acoustical control mats require a thicker pour of gypsum concrete. See chart below showing minimum thickness requirements.

SCM Acoustical Control Mat Type	FIRM-FILL® GCU Required Minimum Depth
FIRM-FILL® SCM-125	3/4" (19mm)
FIRM-FILL® SCM-250	1" (25mm)
FIRM-FILL® SCM-400	1" (25mm)
FIRM-FILL® SCM-750	1-1/2" (38mm)

Cross-Section of Floor and Wall Assembly



WARRANTY

HACKER INDUSTRIES, INC. SHALL NOT BE LIABLE FOR INCIDENTAL OR CONSEQUENTIAL DAMAGES, DIRECTLY OR INDIRECTLY SUSTAINED, NOR FOR ANY LOSS CAUSED BY APPLICATION OF THESE GOODS NOT IN ACCORDANCE WITH CURRENT PRINTED INSTRUCTION OR FOR OTHER THAN THE INTENDED USE. OUR LIABILITY IS EXPRESSLY LIMITED TO REPLACEMENT OF DEFECTIVE GOODS. ANY CLAIM SHALL BE DEEMED WAIVED UNLESS MADE IN WRITING TO US WITHIN 30 DAYS FROM DATE IT WAS, OR REASONABLY SHOULD HAVE BEEN, DISCOVERED.

PRODUCT INFORMATION

Visit HackerIndustries.com for the most up-to-date product information.

SAFETY FIRST

Follow good safety/industrial practices during installation. Wear appropriate personal protective equipment. Read SDS and literature prior to specification and/or installation.

TRADEMARKS

FIRM-FILL, GYP-SPAN, Let Our Products FLOOR You and the associated logos are trademarks of Hacker Industries, Inc.

© 7/2018 Hacker Industries, Inc.

Hacker Industries, Inc.
 1401 Dove Street, Suite 640
 Newport Beach, CA 92660
Hackerindustries.com

Contact Info
 (949) 729-3101
 (800) 642-3455
info@hackerindustries.com